



NETHERLANDS

# HOLLAND

NEW



Maas - Merwedekanaal - Vecht - Gouwe

Famous for windmills, cheese, tulips and of course canals, the Netherlands is the perfect destination for enjoying a boating holiday! Captain a Nicols boat and discover picturesque towns and villages, art and history museums and the stunning Natura 2000 listed national park. Natural waters are great for swimming and of course bikes on board mean that you can enjoy the national pastime of cycling!

## FROM KERKDRIEL

Kerkdriel is a great location to have a Nicols base as in addition to the waters being calm and ideal for beginners to boating, they are also perfect for swimming and fishing.

Surrounding the waterways is beautiful flora and fauna including the "De Biesbosch" national park which is one of the largest found in the Netherlands. It is recognised as a wetland of international importance and is listed as a Natura 2000 area by the EU Habitat and Birds Directives.

The town of Gouda is famous for its tasty cheese but even if you don't like cheese we recommend a visit to explore the charming old town with the Sint-Jans church (famous for the impressive stained glass windows), markets and bustling streets.

Amsterdam is the largest city in the Netherlands and is dissected by a network of canals. Visit museums of art (including Van Gogh), history and science and take time to simply wander through the colourful streets for shopping, restaurants, cafes and of course the famous Red Light District.

One of the many cruising routes on offer from Kerkdriel will lead you and your crew to Maastricht - the city known to be the origin of the European Union. Explore the many cultural and historic buildings including the ramparts and tower before enjoying a shopping spree along the streets that are lined with trendy designer shops.



# DON'T MISS

	Biesboch National Park, a Natura 2000 listed area Numerous nature reserves: Maasbommel, Mook-Plamsolen, Tiengemeten, Leukermeer
	<b>GOUDA:</b> Sint-Jans church, charming city streets <b>AMSTERDAM:</b> art museums (Van Gogh Museum), history and science museums, Red Light District, house of Anne Frank <b>WOUDRICHEM:</b> medieval castle of Loevestein (14 <sup>th</sup> century) <b>HEUSDEN:</b> fortified city.
	<b>SPECIALITIES:</b> Gouda cheese from Gouda! The 'Bossche bowl': a profiterole type pastry from the Dutch city of 's-Hertogenbosch 'Stroopwafels': caramel filled waffles The 'broodje haring': raw herring sandwiches served with onions 'Stamppot': traditional dish made with mashed potato, sauerkraut, carrots or onions 'Bitterballen': a soup with peas, rye bread and bacon - Many Dutch beers!
	The popularity of bikes here means there are many cycle routes to be enjoyed.

# KERKDRIEL

Amsterdam (90 km), Bruxelles (160 km), Düsseldorf (165 km)  
Paris (450 km), Hamburg (465 km).



A2 **19** Kerkdriel.

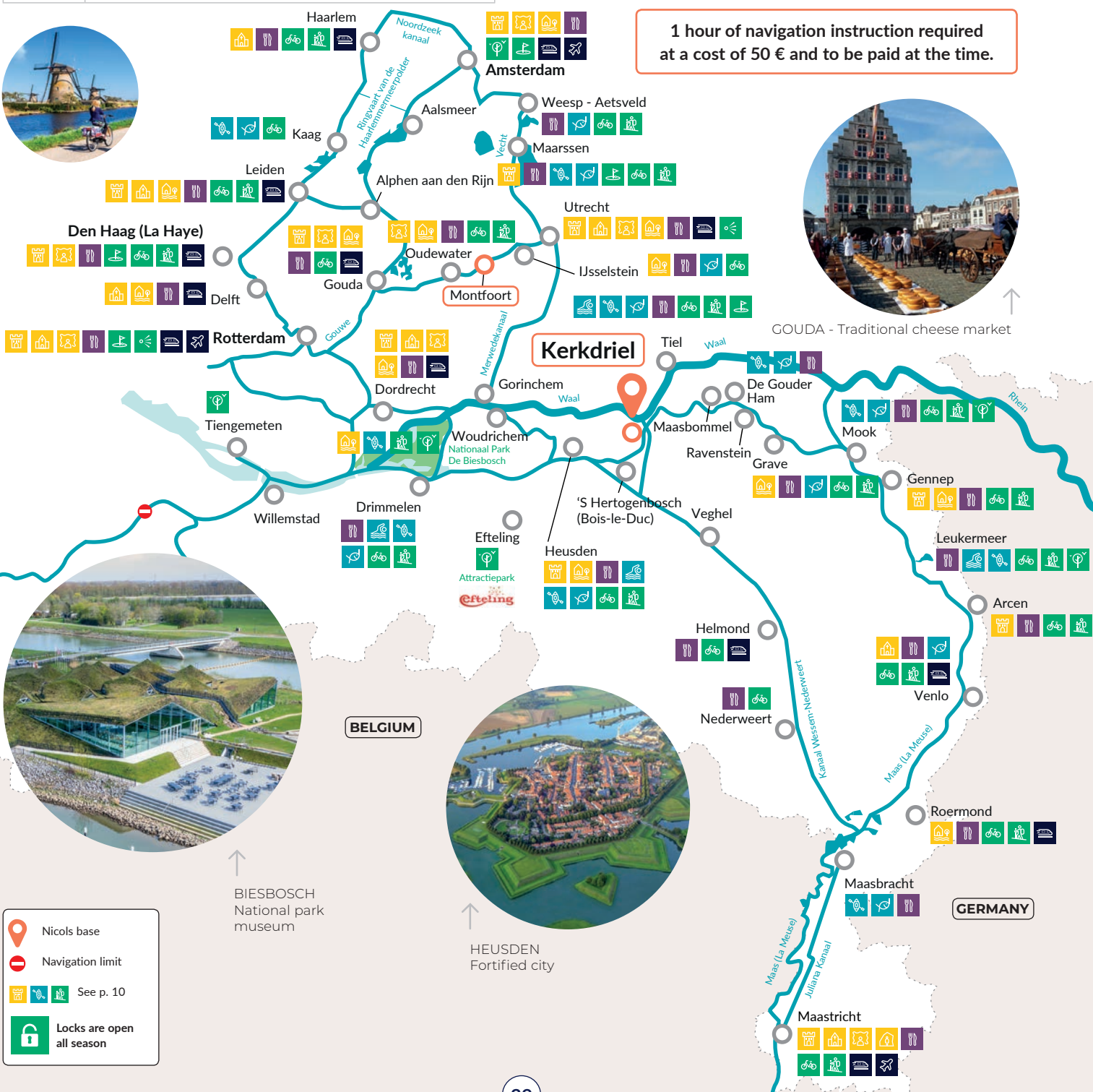
Bois-le-Duc (14 km), Utrecht (50 km).

Amsterdam Schipol (90 km).

**ESTIVALE** Duo® | Quattro® B | Sixto® | Octo® Fly

DURATION	CRUISE	KM	LOCKS	HOURS
2 DAY WEEKEND	Kerkdriel > Heusden > Gorinchem > Kerkdriel	100	2	12h
SHORT BREAK	Kerkdriel > Biesboch > Kerkdriel	120	0	15h
1 WEEK	Kerkdriel > Rotterdam > Gouda > Gorinchem > Heusden > Kerkdriel	200	9	25h
1 WEEK (One way)	Kerkdriel > Gouda > Amsterdam > Utrecht > IJsselstein > Montfoort	220	8	28h
2 WEEKS	Kerkdriel > Bois-le-Duc > Veghel > Maastricht > Venlo > Ravenstein > Kerkdriel	350	22	60h

1 hour of navigation instruction required at a cost of 50 € and to be paid at the time.



GOUDA - Traditional cheese market



BIESBOSCH National park museum



HEUSDEN Fortified city

- Nicols base
- Navigation limit
- See p. 10
- Locks are open all season